

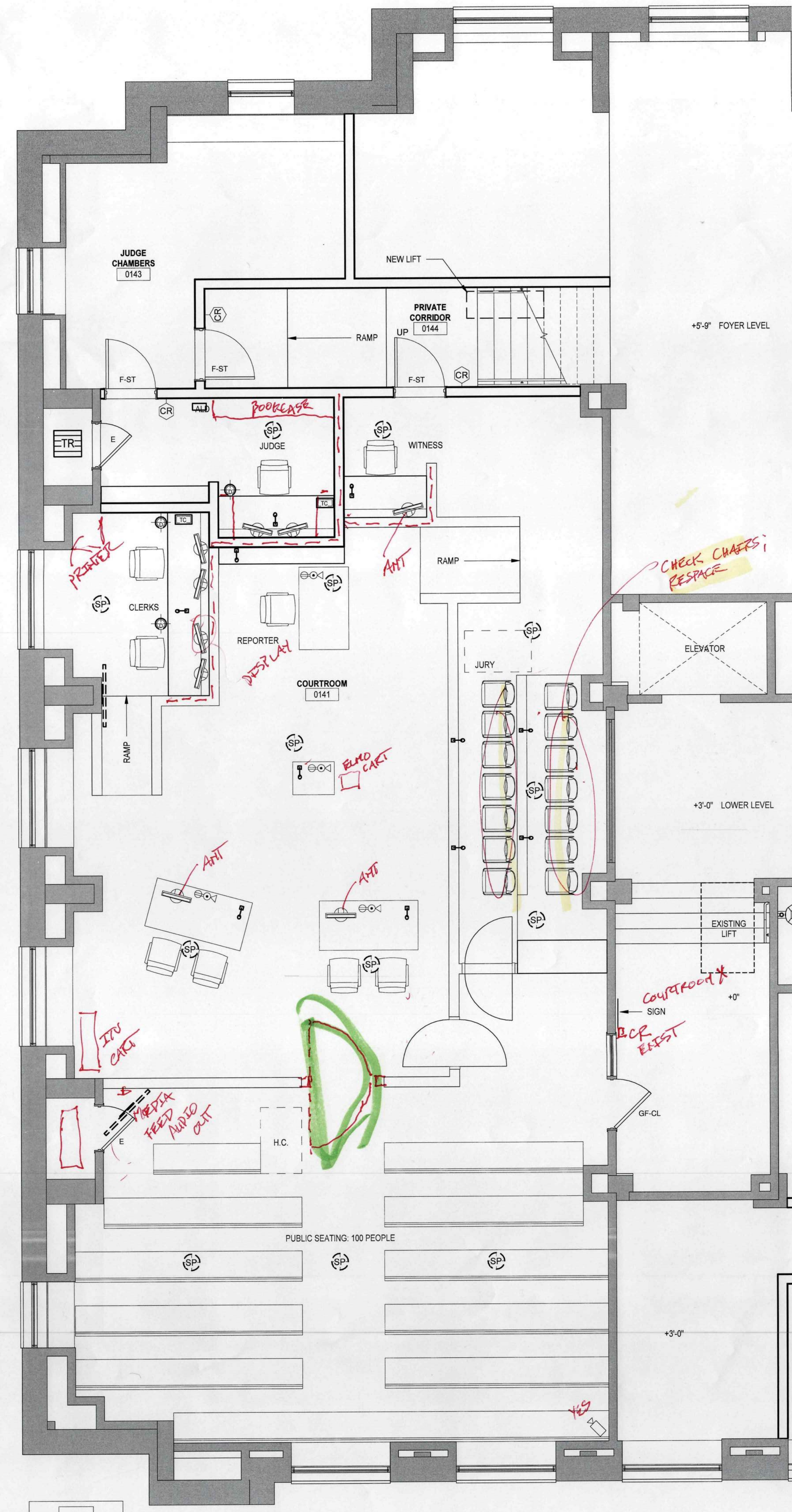
3. No mics needed at jury box, not using them elsewhere. Provide option for wireless mic or plug for optional plug in mic if needed in future.
 - a. Discussion of spacing / type of seating at the jury box. Prefer fixed seats but want to ensure they are spaced far enough apart for each juror to feel like they have room. Should be fixed task style chairs.
 4. Recording would be controlled at the clerk's station through the Crestron.
 5. Speaker locations as shown are approved.
 6. Audio out jack at the court reporter requested for listening to the live recording.
- B. Visual Evidence Presentation System
- i. Provide Data Access ports at attorney tables and at podium.
 - ii. Any evidence to be displayed would go to the clerk and judge for release through the Crestron.
 - iii. Annotative touch screens should be planned at the attorney tables and the witness. Not yet sure how this would be used but would like the option.
 - iv. Clerk does not need presentation input but does need the ability to play video from their computer to the screens in the courtroom.
 - v. Portable ITV cart will be used, will relocate one from the third floor to this location. Would need to connect at the same location as the podium.
 - vi. Locate an audio out for media feed at gallery.
- C. Courthouse / Courtroom Security
- i. Review of security screening proposal.
 1. Modular partition walls in a bronze finish to closely match existing frames to be used. Signage directing visitors to screening to be placed on the glass.
 2. Sheriff would like an additional partition and sliding door just beyond the metal detector. If the screening officer has to leave to deal with an emergency they can close and lock that door.
 3. Camera in courtroom is ok with both the judges and sheriff. It will be monitored from the security station and the security officer should have the option to turn on sound if they witness something suspicious.
 4. Duress buttons at Judge and Clerk to be provided. Two button alarm so can't be pressed accidentally.
 5. Camera at exit door in vestibule also to be watched by security officer.
 6. Sheriff would like to limit the possibility of unintentional entrance at the exit door, no entry hardware on vestibule side add camera to watch from security screening and DPS to ensure door is not propped open.
 7. Extents of ballistic material were reviewed and noted on plan. Ballistic material for judge, witness and clerks. Not at jury.
- D. Review of doors and hardware at all doors.
- i. See markups on the floor plans for changes made to doors and locations where card readers are requested.

- E. Courtroom Layout Finalization
 - i. Gates to swing both ways.
 - ii. Add gate at primary opening between the gallery and well.
 - iii. Need an area for printer at the clerk station.
 - iv. Add bookshelves next to judge and behind judge.
 - v. Add small drawers for form storage at judge's bench.
 - vi. Signage identifying the Courtroom to be installed on glass at transom above entry door, County to identify what to call it. Courtroom 3?
- F. Clerk of Courts
 - i. Leave existing wall at break room. Remove door and leave cased opening.
 - ii. Cameras to be located at Clerk of Courts lobby and within department. Viewable at clerk of Courts office on screen and at security station.
 - iii. Clerk would like a "doorbell" to call for service at public counter.
 - iv. Ballistic glazing with offsets to speak through is the direction.
 - v. In addition to deal trays, a secure specimen style pass should be provided. Can be located next to the door.
 - vi. Need a button to remote unlock the records viewing room from the public counter, one is ok.
- G. Mechanical Design
 - i. Location / concept for improving airflow in the remodel spaces as requested by owner at previous meeting is acceptable.
 - ii. Milo questioned how the noted heating and cooling of that outside air was accomplished, he doesn't believe using their current system capacity would work.
 - 1. BKV will verify the MAU provides the heating and cooling independently.
 - iii. Lee questioned if this was in the original estimate. It was not as this isn't a code requirement but per Milo was necessary to improve the occupant comfort in these spaces.
- H. Media Renderings
 - i. Lee asked if plans and renderings of the new courtroom could be provided for use with the media.
 - 1. BKV will work on getting this out, Anthony will follow up with an ETS on when the rendering could be expected. Some design work needed to put out an appropriate level of rendering.
- I. Next Steps
 - i. Design Drawing Set Issued for County Review: March 6, 2018
 - ii. Bid Documents Issued: March 13, 2018
 - iii. Pre-Bid Meeting: TBD
 - iv. Bids Received: TBD
 - v. Mobilization: TBD

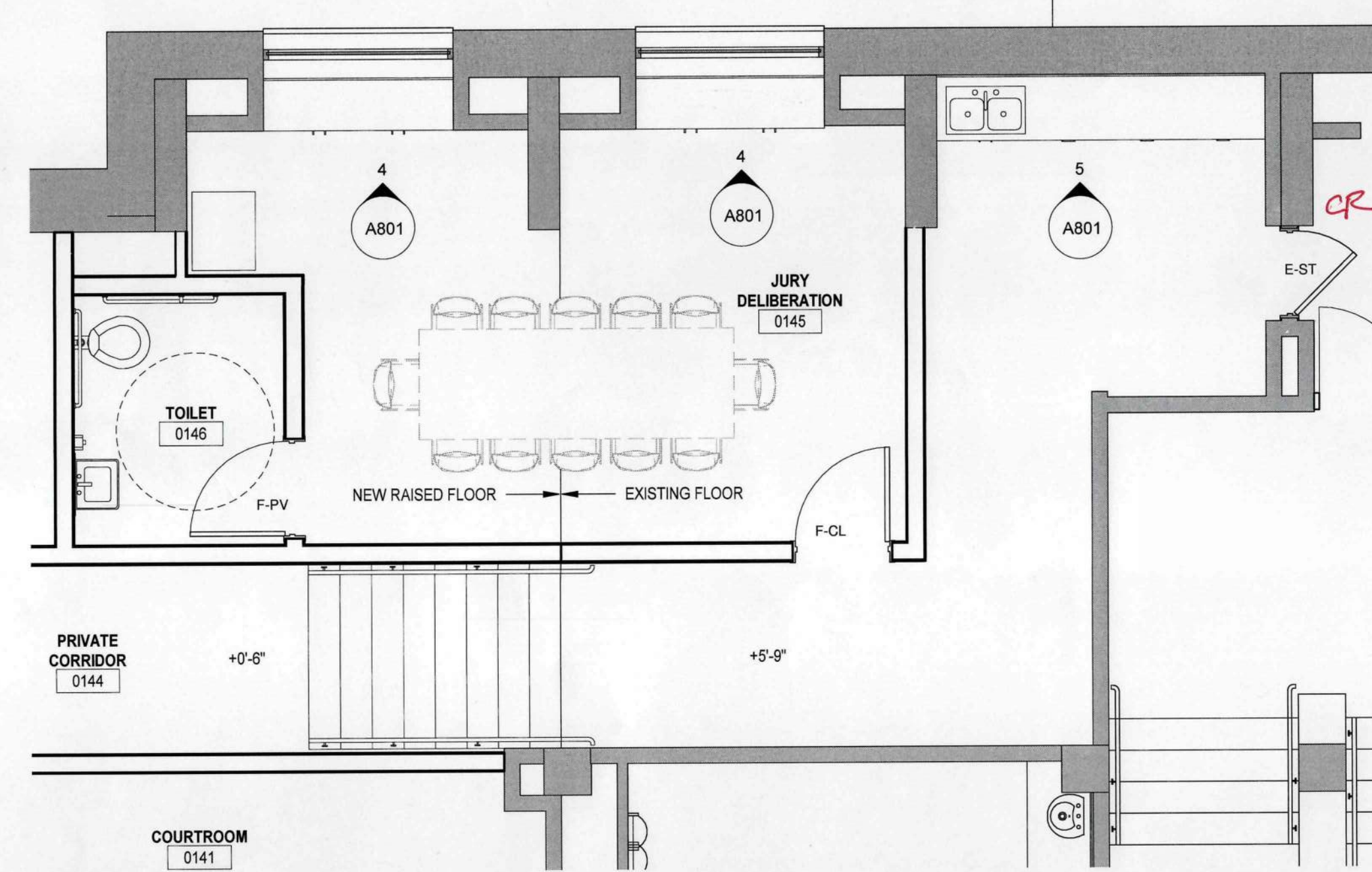
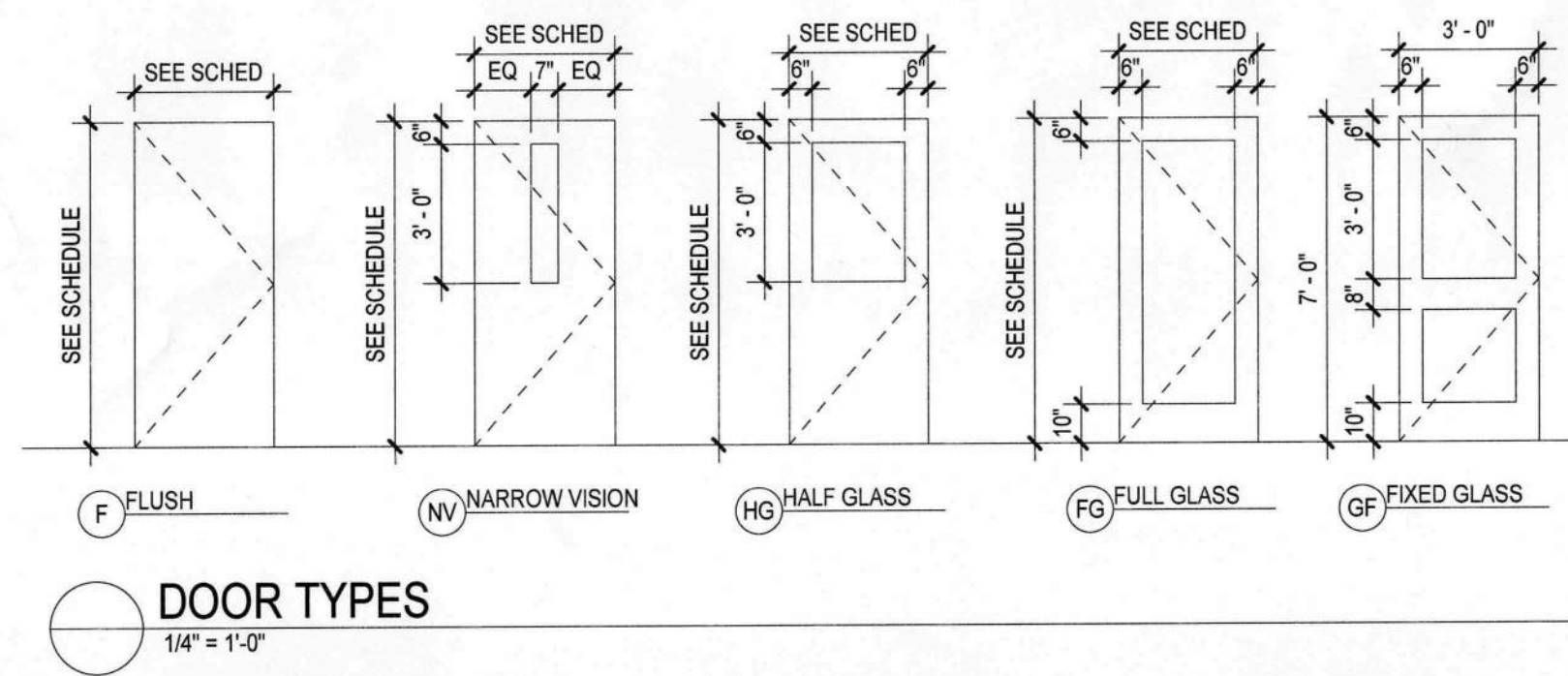
End of Meeting Minutes

Attachments: Scanned Redline Floor Plan

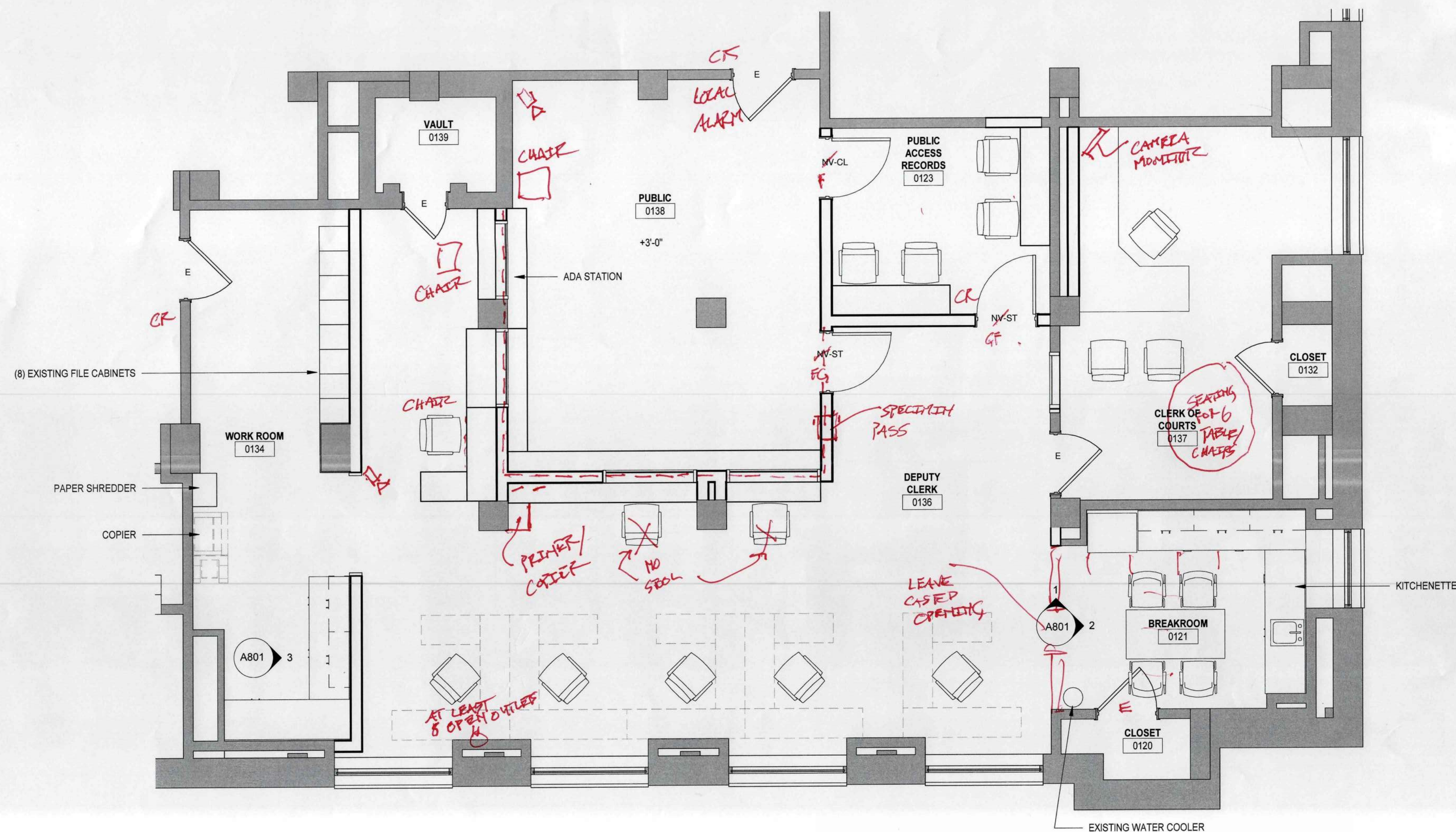
BIM 360/12117-02 Codington County Courthouse Remodeling/2117-02_Codington County Courthouse Remodel_A1_2018.rvt
2/19/2018 4:40:26 PM



1 PARTIAL COURTROOM LEVEL ENLARGED TECHNOLOGY FLOOR PLAN
A152 1/4" = 1'-0"



2 PARTIAL FOYER LEVEL ENLARGED FLOOR PLAN - JURY DELIBERATION
A152 1/4" = 1'-0"



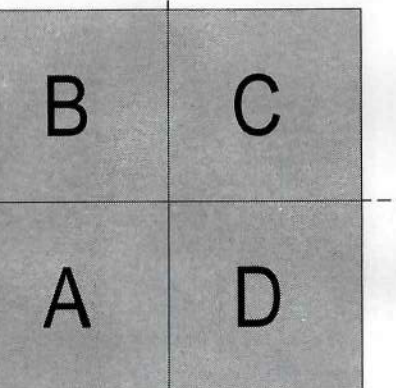
3 PARTIAL LOWER LEVEL ENLARGED FLOOR PLAN - DEPUTY CLERK
A152 1/4" = 1'-0"

TECHNOLOGY LEGEND:

	TECHNOLOGY RACK
	MICROPHONE
	DESKTOP DISPLAY MONITOR
	DISPLAY MONITOR
	CONTROL TOUCH SCREEN
	PC TOWER (UNDER COUNTER)
	RECESSED A/V DATA CONNECTION
	RECESSED FLOOR BOX
	ASSISTED LISTENING DEVICE
	SECURITY CAMERA
	CEILING-MOUNTED SPEAKER
	DURESS ALARM BUTTON (UNDERCOUNTER)
	CARD READER
	DATA/DUPLEX

NOTE
TECHNOLOGY DRAWING IS PROVIDED FOR REFERENCE AND COORDINATION ONLY.
EQUIPMENT AND FIXTURES SHOWN ON THIS DRAWING WILL BE FURNISHED AND INSTALLED BY THE OWNER, UNLESS NOTED OTHERWISE.
REFER TO ELECTRICAL DRAWINGS FOR PATHWAYS, CONDUIT, BOXES, ETC. THAT ARE REQUIRED AS PART OF THE CONTRACTOR'S SCOPE OF WORK.

ISSUE #	DATE	DESCRIPTION



NOT FOR CONSTRUCTION

DRAWN BY	CJN
CHECKED BY	BRB
COMMISSION NUMBER	2117.02

