

**Jail Needs
Assessment
Update
for
Codington County
South Dakota**

**Bill Garnos
Jail Consultant**

January 2018

Jail Needs Assessment Update for Codington County, South Dakota

Table of Contents

Introduction	1
1. Inmate Population Trends	3
A. Bookings	3
B. Average Daily Population (ADP)	5
Codington County Inmates	5
Inmates Held for Other Jurisdictions	7
Total Inmates	9
C. High and Low Inmate Population	11
2. Inmate Population Projections	13
A. Codington County Inmates	13
B. Inmates Held for Other Jurisdictions	16
C. Total Inmates	18
D. Forecast of Jail Capacity Requirements	21

Graphs and Tables

1. Inmate Population Trends

- **Monthly Bookings at the
Codington County Detention Center (2008 – 2017) 4**
- **ADP of Codington County Inmates at the
Codington County Detention Center (2008 – 2017) 6**
- **ADP of Inmates Held for Other Jurisdictions at the
Codington County Detention Center (2008 – 2017) 8**
- **Total ADP at the Codington County Detention Center (2008 – 2017) 10**
- **High and Low Inmate Population Range at the
Codington County Detention Center (2008 – 2017) 12**

2. Inmate Population Projections

- **Updated ADP Projections —
Codington County Inmates (2018 – 2025) 15**
- **Updated ADP Projections — Inmates Held
for Other Jurisdictions (2018 – 2025) 17**
- **Updated ADP Projections — Total Inmates (2018 – 2025) 20**
- **Updated Forecast of Jail Capacity Requirements (2018 – 2035) 22**

Introduction

In October 2015, a Jail Needs Assessment was completed for Codington County. The study included:

Review of Previous Jail Studies — A description of four jail studies and facility assessments of the Codington County Detention Center.

Criminal Justice Statistical Indicators — A review of the County's crime and arrest trends, and criminal case filing trends in Circuit Court from 2008 – 2014, and county population projections through 2035.

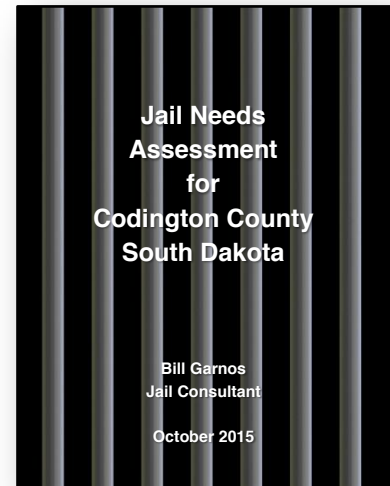
Inmate Population Trends — An examination of inmate population trends at the Detention Center from 2008 through September 2015, including the number of jail bookings, the Average Daily Population (ADP), and the high and low inmate population range each month. Codington County's inmate population trends were analyzed separately from inmates held for other counties. An inmate population profile was also developed.

Inmate Population Projections — Inmate population projections and a forecast of Codington County's jail capacity requirements through 2035, for facility planning purposes.

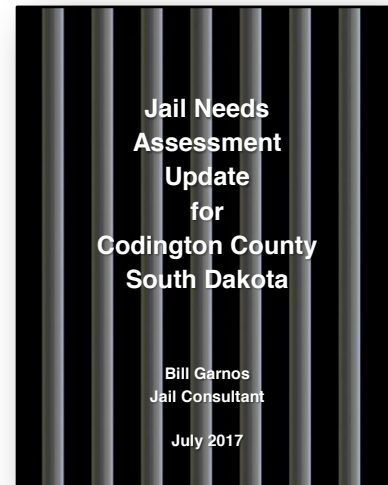
Assessment of the Existing Jail Facility — An assessment of the existing facility's "capacity," and photos showing current jail conditions.

In July 2017, an Update was provided with an additional 21 months of jail population data — from October 2015 through June 2017. The update included:

Inmate Population Trends — An update of inmate population trends since the preceding study, including the number of bookings, the ADP, and the high and low inmate population range each month.



Inmate Population Projections — Updated inmate population projections and forecast of jail capacity requirements through 2035. The updated projections used the same forecasting models as the original study, updated with 21 months of additional data.



Since the completion of that Update, an additional six months (July – December 2017) of jail population data have been accumulated, providing a total of 27 months of additional data since the 2015 study was completed.

This Update, combined with the data from the preceding update and the original study, provides a full ten years of monthly inmate population data for Codington County to use for facility planning purposes.

1. Inmate Population Trends

The 2015 study examined the inmate population trends at the Codington County Detention Center over the preceding seven years (2008 – 2014), and for 2015 to date (January – September) — a period of 93 months.

Since the completion of the 2015 study, an additional 27 months (October 2015 – December 2017) of jail population data have been accumulated.

A. Bookings

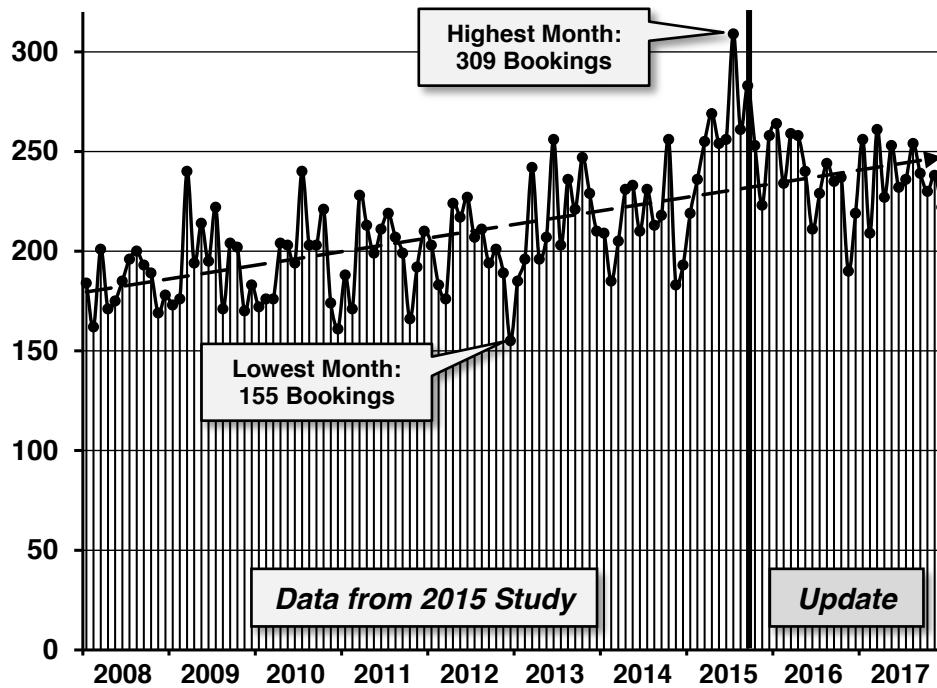
2015 Study — Over the preceding seven years, the number of bookings each month increased from an average of 184 bookings per month in 2008, to an average of 214 bookings per month in 2014. During the first nine months of 2015, the Detention Center averaged 260 bookings per month.

Since 2008, the number of bookings each month ranged from a low of 155 bookings in December 2012, to a high of 309 bookings in July 2015.

Update — In the 27 months since the completion of the 2015 study, the Detention Center has averaged 237 bookings per month. The number of bookings each month ranged from a low of 190 bookings in November 2016, to a high of 264 bookings in January 2016.

The graph and table on the following page show the number of jail bookings at the Codington County Detention Center for each month from 2008 through 2017, including the high, low, and overall trendline.

Monthly Bookings at the
 Codington County Detention Center (2008 – 2017)



Month	2008	2009	2010	2011	2012	2013	2014	2015	2016	2017
January	184	173	172	188	203	185	209	219	264	256
February	162	176	176	171	183	196	185	236	234	209
March	201	240	176	228	176	242	205	255	259	261
April	171	194	204	213	224	196	231	269	258	227
May	175	214	203	199	217	207	233	254	240	253
June	185	195	194	211	227	256	210	256	211	232
July	196	222	240	219	207	203	231	309	229	236
August	200	171	203	207	211	236	213	261	244	254
September	193	204	203	199	194	221	218	283	235	239
October	189	202	221	166	201	247	256	253	237	230
November	169	170	174	192	189	229	183	223	190	238
December	178	183	161	210	155	210	193	258	219	222
Monthly Average	184 Bookings	195 Bookings	194 Bookings	200 Bookings	199 Bookings	219 Bookings	214 Bookings	256 Bookings	235 Bookings	238 Bookings
Annual Total	2,203 Bookings	2,344 Bookings	2,327 Bookings	2,403 Bookings	2,387 Bookings	2,628 Bookings	2,567 Bookings	3,076 Bookings	2,820 Bookings	2,857 Bookings

Source: Codington County Sheriff's Office. Data includes all inmates from all jurisdictions.

B. Average Daily Population (ADP)

Codington County Inmates

2015 Study — Over the preceding seven years (2008 – 2014), the number of Codington County inmates in the Detention Center ranged from an annual ADP of 50 to 56 inmates. During the first nine months of 2015, the Detention Center held an ADP of 61 Codington County inmates.

Since 2008, the ADP of Codington County inmates each month ranged from a low of 38 Codington County inmates in January 2008, to a high of 72 Codington County inmates September 2015 (at the conclusion of the study).

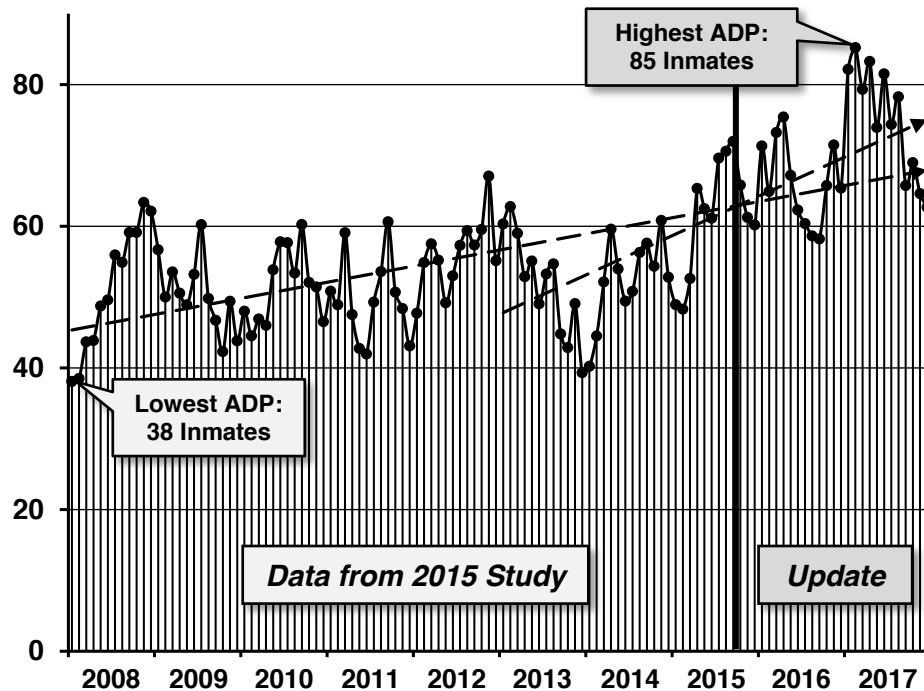
The Detention Center hit a new record high ADP of 70, 71, and 72 Codington County inmates in each of the last three months covered by the 2015 study (July, August, and September 2015).

Update — In the 27 months since the completion of the 2015 study, the Detention Center has maintained an ADP of 70 Codington County inmates each month. The ADP ranged from a low of 58 Codington County inmates in September 2016, to a record high of 85 Codington County inmates in February 2017.

In 2017, the Detention Center held an ADP of 75 Codington County inmates each month.

The graph and table on the following page show the ADP of Codington County inmates in the Detention Center for each month from 2008 through 2017, including the high, low, the overall (10-year) trendline, and the trendline over the past five years (2013 – 2017).

**Average Daily Population of Codington County Inmates
 at the Codington County Detention Center (2008 – 2017)**



Month	2008	2009	2010	2011	2012	2013	2014	2015	2016	2017
January	38	57	48	51	48	60	40	49	71	82
February	39	50	45	49	55	63	45	48	65	85
March	44	54	47	59	58	59	52	53	73	79
April	44	51	46	48	55	53	60	65	75	83
May	49	49	54	43	49	55	54	62	67	74
June	50	53	58	42	53	49	49	61	62	81
July	56	60	58	49	57	53	51	70	60	74
August	55	50	53	54	59	55	56	71	59	78
September	59	47	60	61	57	45	58	72	58	66
October	59	42	52	51	60	43	54	66	66	69
November	63	49	51	48	67	49	61	61	71	65
December	62	44	47	43	55	39	53	60	65	63
Annual ADP	51 Inmates	50 Inmates	52 Inmates	50 Inmates	56 Inmates	52 Inmates	53 Inmates	62 Inmates	66 Inmates	75 Inmates

Source: Codington County Sheriff's Office.

Inmates Held for Other Jurisdictions

Inmates held for other jurisdictions primarily include inmates from Clark County, Deuel County, and Hamlin County, but also include a few inmates held occasionally for other counties and for the South Dakota Department of Corrections.

2015 Study — Over the preceding seven years (2008 – 2014), the number of inmates held at the Detention Center for other jurisdictions ranged from an annual ADP of 5 to 6 inmates. During the first nine months of 2015, the Detention Center held an ADP of 7 inmates for other jurisdictions.

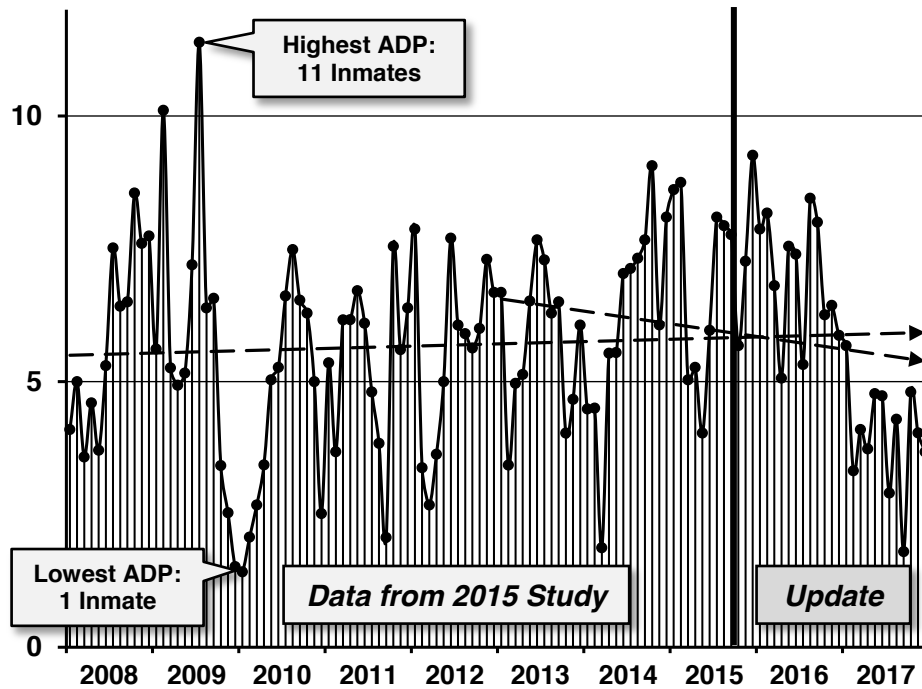
Since 2008, the ADP of inmates held for other jurisdictions each month ranged from a low of 1 inmate held for another jurisdiction in January 2010, to a high of 11 inmates held for other jurisdictions in July 2009.

Update — In the 27 months since the completion of the 2015 study, the Detention Center has maintained an ADP of 6 inmates held for other jurisdictions each month. The ADP ranged from a low of 2 inmates held for other jurisdictions in September 2017, to a high of 9 inmates held for other jurisdictions in December 2015.

In 2017, the Detention Center held an ADP of 4 inmates for other jurisdictions each month.

The graph and table on the following page show the ADP held for other jurisdictions for each month from 2008 through 2017, including the high, low, the overall (10-year) trendline, and the trendline over the past five years (2013 – 2017).

**Average Daily Population of Inmates Held for Other Jurisdictions
 at the Codington County Detention Center (2008 – 2017)**



Month	2008	2009	2010	2011	2012	2013	2014	2015	2016	2017
January	4	6	1	5	8	7	4	9	8	6
February	5	10	2	4	3	3	5	9	8	3
March	4	5	3	6	3	5	2	5	7	4
April	5	5	3	6	4	5	6	5	5	4
May	4	5	5	7	5	7	6	4	8	5
June	5	7	5	6	8	8	7	6	7	5
July	8	11	7	5	6	7	7	8	5	3
August	6	6	7	4	6	6	7	8	8	4
September	7	7	7	2	6	7	8	8	8	2
October	9	3	6	8	6	4	9	6	6	5
November	8	3	5	6	7	5	6	7	6	4
December	8	2	3	6	7	6	8	9	6	4
Annual ADP	6	6	5	5	6	6	6	7	7	4
	Inmates	Inmates	Inmates	Inmates	Inmates	Inmates	Inmates	Inmates	Inmates	Inmates

Source: Codington County Sheriff's Office.

Total Inmates

2015 Study — Over the preceding seven years (2008 – 2014), the total number of inmates in the Detention Center ranged from an annual ADP of 55 to 62 inmates. During the first nine months of 2015, the Detention Center held an ADP of 68 total inmates.

Since 2008, the total ADP each month ranged from a low of 42 inmates in January 2008, to a high of 80 inmates in September 2015 (at the conclusion of the study).

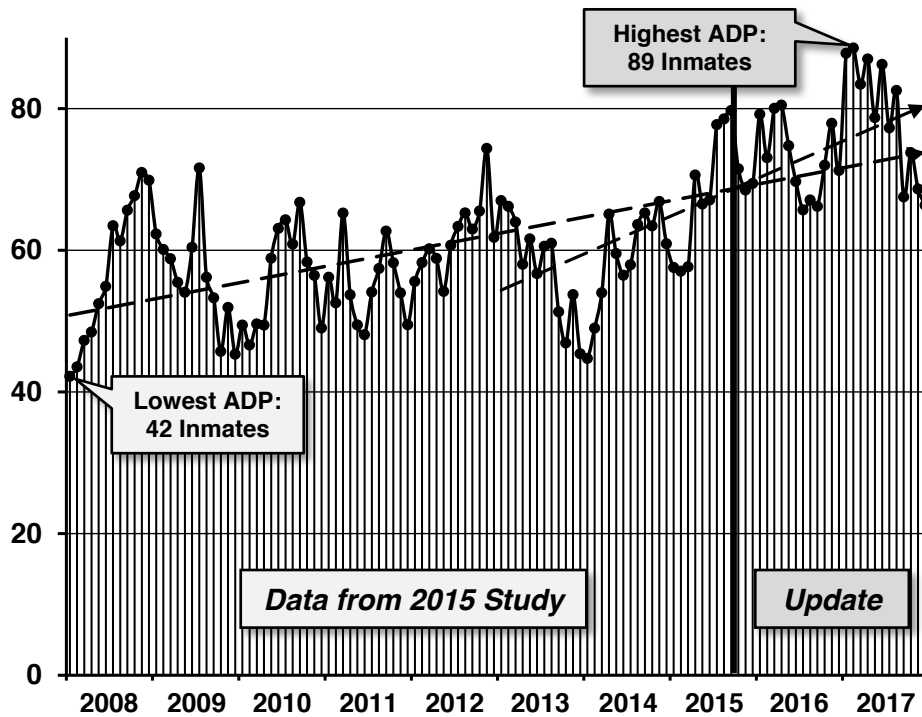
The Detention Center hit a new record high total ADP of 78, 79, and 80 inmates in each of the last three months covered by the 2015 study (July, August, and September 2015).

Update — In the 27 months since the completion of the 2015 study, the Detention Center has maintained an ADP of 75 total inmates each month. The ADP ranged from a low of 66 total inmates in July and September 2016 and December 2017, to a record high of 89 total inmates in February 2017.

In 2017, the Detention Center held an ADP of 79 total inmates each month.

The graph and table on the following page show the total ADP at the Detention Center for each month from 2008 through 2017, including the high, low, and overall trendline.

**Total Average Daily Population at the
 Codington County Detention Center (2008 – 2017)**



Month	2008	2009	2010	2011	2012	2013	2014	2015	2016	2017
January	42	62	49	56	56	67	45	58	79	88
February	44	60	47	53	58	66	49	57	73	89
March	47	59	50	65	60	64	54	58	80	83
April	48	55	49	54	59	58	65	71	80	87
May	52	54	59	49	54	62	60	67	75	79
June	55	60	63	48	61	57	56	67	70	86
July	63	72	64	54	63	61	58	78	66	77
August	61	56	61	57	65	61	64	79	67	83
September	66	53	67	63	63	51	65	80	66	68
October	68	46	58	58	66	47	63	71	72	74
November	71	52	56	54	74	54	67	69	78	69
December	70	45	49	49	62	45	61	69	71	66
Annual ADP	57	56	56	55	62	58	59	69	73	79
	Inmates	Inmates	Inmates	Inmates	Inmates	Inmates	Inmates	Inmates	Inmates	Inmates

Source: Codington County Sheriff's Office.

C. High and Low Inmate Population

2015 Study — Over the preceding seven years (2008 – 2014), the total number of inmates in the Detention Center each day ranged from a low of 35 inmates in 2008, to a high of 82 inmates in 2008, 2009, 2010, and 2012.

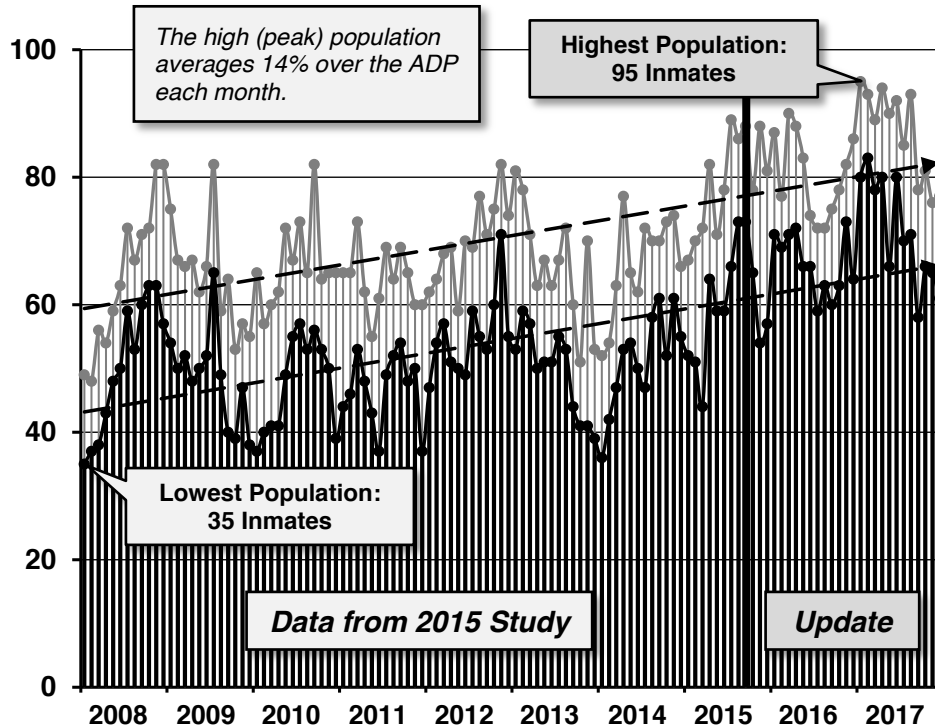
During the first nine months of 2015, the total number of inmates in the Detention Center each day ranged from 44 – 89 inmates.

Update — In the 27 months since the completion of the 2015 study, the total number of inmates in the Detention Center each day has ranged from a low of 54 inmates on November 26, 2015, to a record high of 95 inmates on January 16, 2017.

Since 2008, the highest (peak) population each month has exceeded the ADP for that month by an average of 14 percent.

The graph and table on the following page show the highest and lowest inmate population at the Detention Center each month for 2008 through 2017, including the high, low, and high/low trendlines.

**High and Low Inmate Population Range at the
 Codington County Detention Center (2008 – 2017)**



Month	2008	2009	2010	2011	2012	2013	2014	2015	2016	2017
January	35 – 49	54 – 75	37 – 65	44 – 65	47 – 62	53 – 81	36 – 52	52 – 67	71 – 87	80 – 95
February	37 – 48	50 – 67	40 – 57	46 – 65	54 – 64	59 – 78	42 – 54	51 – 70	69 – 77	83 – 93
March	38 – 56	52 – 66	41 – 60	53 – 73	57 – 68	57 – 71	47 – 63	44 – 72	71 – 90	78 – 89
April	43 – 54	48 – 67	41 – 62	48 – 62	51 – 69	50 – 63	53 – 77	64 – 82	72 – 88	80 – 94
May	48 – 59	50 – 62	49 – 72	43 – 55	50 – 59	51 – 67	54 – 65	59 – 71	66 – 83	66 – 90
June	50 – 63	52 – 66	55 – 67	37 – 61	49 – 70	51 – 63	50 – 62	59 – 78	66 – 74	80 – 92
July	59 – 72	65 – 82	57 – 73	49 – 69	59 – 69	55 – 67	47 – 72	66 – 89	59 – 72	70 – 85
August	53 – 67	49 – 59	53 – 65	52 – 64	55 – 77	53 – 72	58 – 70	73 – 86	63 – 72	71 – 93
September	60 – 71	40 – 64	56 – 82	54 – 69	53 – 71	44 – 60	61 – 70	73 – 88	60 – 75	58 – 78
October	63 – 72	39 – 53	53 – 64	48 – 65	60 – 75	41 – 51	52 – 73	65 – 78	63 – 78	66 – 81
November	63 – 82	47 – 57	50 – 65	50 – 60	71 – 82	41 – 70	61 – 74	54 – 88	73 – 82	65 – 76
December	57 – 82	38 – 55	39 – 65	37 – 60	55 – 74	39 – 53	55 – 66	57 – 81	64 – 86	61 – 77
Annual Range	35 – 82 Inmates	38 – 82 Inmates	37 – 82 Inmates	37 – 73 Inmates	47 – 82 Inmates	39 – 81 Inmates	36 – 77 Inmates	44 – 89 Inmates	59 – 90 Inmates	58 – 95 Inmates

Source: Codington County Sheriff's Office. Data includes all inmates from all jurisdictions.

2. Inmate Population Projections

The 2015 study provided:

- Inmate population projections for the next 20 years for Codington County inmates, inmates held for other jurisdictions, and total inmates, based on current trends; and
- A forecast of jail capacity requirements for Codington County (i.e., total jail beds needed), based on the inmate population projections.

This section provides updated projections and jail capacity requirements, incorporating the additional 27 months of inmate population data from the Detention Center.

A. Codington County Inmates

2015 Study — The 2015 study applied three different, commonly used forecasting methodologies to Codington County's inmate population trends to estimate the County's future jail population. These forecasting models included:

- *Rate of Incarceration (ROI) Projections* — Projections based on the 2008 – 2015 average ROI of 1.9 inmates per 1,000 County residents.
- *Average Daily Population (ADP) Trend Projections* — Projections based on the ADP trend of Codington County inmates from 2008 – 2015.
- *Five-Year ADP Trend Projections* — Projections based on the ADP trend of Codington County inmates over the preceding five years (October 2010 – September 2015).

The results of these three models were used to develop a range of inmate population projections for the next ten years. The 2015 study estimated that Codington County will have an annual ADP of:

- 56 – 63 inmates in five years (by 2020); and
- 57 – 70 inmates in ten years (by 2025).

Long range projections estimated that Codington County will have an ADP of:

- 58 – 76 inmates in 15 years (by 2030); and
- 59 – 83 inmates in 20 years (by 2035).

Update — The same three forecasting models were updated with 27 months of additional data. The updated results estimate that Codington County will have an annual ADP of:

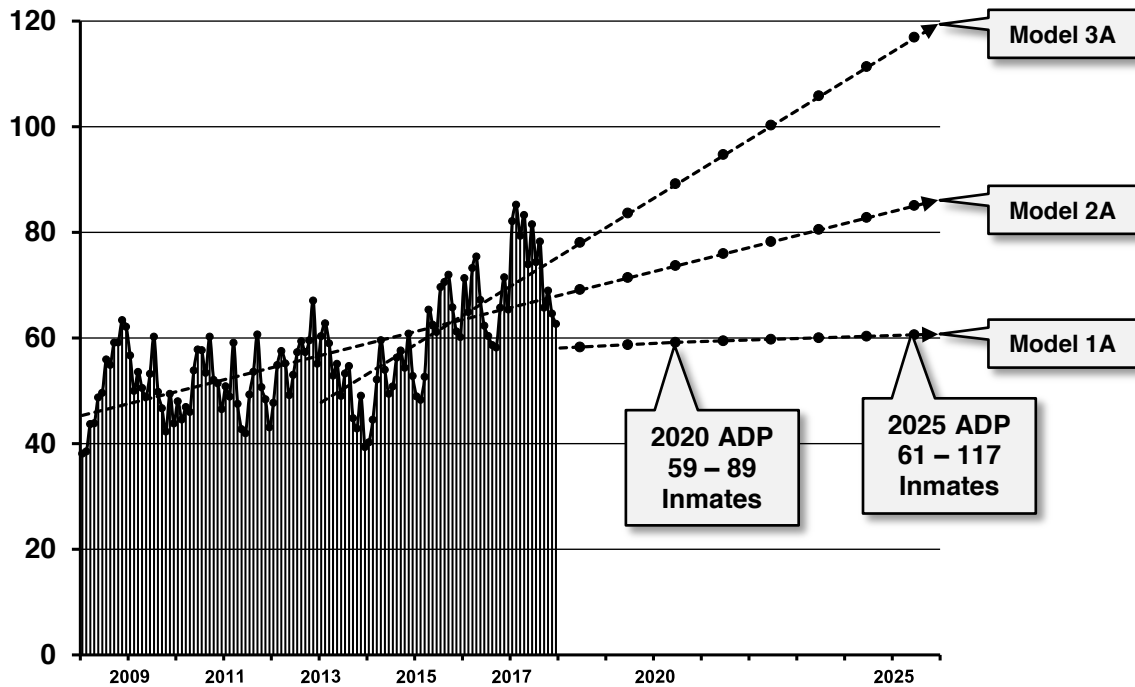
- 59 – 89 inmates by 2020 (the five-year estimate from the 2015 study); and
- 61 – 117 inmates by 2025 (the ten-year estimate).

Updated long range projections estimate that Codington County will have an ADP of:

- 62 – 145 inmates by 2030 (the 15-year estimate); and
- 63 – 172 inmates by 2035 (the 20-year estimate).

The graph and table on the following page show the County's actual inmate population from 2008 through 2017, and the results of the updated inmate population projection models through the ten-year estimate from the 2015 study.

Updated ADP Projections — Codington County Inmates (2018 – 2025)



Forecast Year from the 2015 Study	Year	Updated Model 1A <i>ROI Projections</i>	Updated Model 2A <i>10-Yr. ADP Trend</i>	Updated Model 3A <i>5-Yr. ADP Trend</i>
1	2016	—	—	—
2	2017	—	—	—
3	2018	58	69	78
4	2019	59	71	84
5	2020	59	74	89
6	2021	59	76	95
7	2022	60	78	100
8	2023	60	81	106
9	2024	60	83	111
10	2025	61	85	117

Model 1A — Rate of Incarceration (ROI) Projections. Projections based on the 2008 – 2017 average ROI of 2.0 inmates per 1,000 County residents, applied to the County’s population projections.

Model 2A — Ten-Year Average Daily Population (ADP) Trend Projections. Projections based on the ADP trend of Codington County inmates over the past ten years (2008 – 2017).

Model 3A — Five-Year ADP Trend Projections. Projections based on the ADP trend of Codington County inmates over the past five years (2013 – 2017).

B. Inmates Held for Other Jurisdictions

2015 Study — The 2015 study applied the same forecasting methodologies to the inmate population trends for inmates being held at the Detention Center for other jurisdictions. The results of these three models were used to develop a range of inmate population projections for the next ten years.

The 2015 study estimated that the Detention Center will have an annual ADP of:

- 7 – 9 inmates from other jurisdictions in five years (by 2020); and
- 8 – 11 inmates from other jurisdictions in ten years (by 2025).

Long range projections estimated that the Detention Center will have an ADP of:

- 9 – 13 inmates from other jurisdictions in 15 years (by 2030); and
- 9 – 15 inmates from other jurisdictions in 20 years (by 2035).

Update — The same three forecasting models were updated with 27 months of additional data. The updated results estimate that the Detention Center will have an annual ADP of:

- 5 – 7 inmates from other jurisdictions by 2020 (the five-year estimate from the 2015 study); and
- 4 – 7 inmates from other jurisdictions by 2025 (the ten-year estimate).

Updated long range projections estimate that Codington County will have an ADP of:

- 2 – 8 inmates from other jurisdictions by 2030 (the 15-year estimate); and
- 1 – 9 inmates from other jurisdictions by 2035 (the 20-year estimate).

The number of inmates held for other jurisdictions has declined over the past 27 months, which may be due in part to the large and growing number of Codington County inmates being held at the Detention Center. This decline in the forecast, therefore, may not actually reflect a decline in the *need* for jail beds for other jurisdictions. It may simply be the result of a declining supply of jail beds available for other jurisdictions to utilize.

The table on the following page shows the results of the updated projection models for inmates held for other jurisdictions through the ten-year estimate from the 2015 study.

Updated ADP Projections — Inmates Held for Other Jurisdictions (2018 – 2025)

Forecast Year from the 2015 Study	Year	Updated Model 1B <i>ROI Projections</i>	Updated Model 2B <i>10-Yr. ADP Trend</i>	Updated Model 3B <i>5-Yr. ADP Trend</i>
1	2016	—	—	—
2	2017	—	—	—
3	2018	6	6	5
4	2019	7	6	5
5	2020	7	6	5
6	2021	7	6	5
7	2022	7	6	4
8	2023	7	6	4
9	2024	7	6	4
10	2025	7	6	4

Model 1B — Rate of Incarceration (ROI) Projections. Projections based on the 2008 – 2017 average ROI of 0.4 inmates per 1,000 residents for Clark, Deuel, and Hamlin Counties, applied to the population projections for those counties, plus the ADP trend for inmates from other jurisdictions.

Model 2B — Ten-Year Average Daily Population (ADP) Trend Projections. Projections based on the ADP trend of other jurisdictions' inmates from 2008 – 2017.

Model 3B — Five-Year ADP Trend Projections. Projections based on the ADP trend of other jurisdictions' inmates over the past five years (2013 – 2017).

C. Total Inmates

2015 Study — The 2015 study combined the results of the forecasting models for Codington County inmates and for inmates held for other jurisdictions to estimate the County's total future jail population. The combined results were used to develop a range of inmate population projections for the next ten years. In addition, a fourth forecasting methodology — based on average length of stay (ALOS) — was used to further test the results of the other models.

The 2015 study estimated that the Codington County Detention Center will have a total annual ADP of:

- 64 – 76 inmates in five years (by 2020); and
- 67 – 87 inmates in ten years (by 2025).

Long range projections estimated the Detention Center will have a total annual ADP of:

- 70 – 98 inmates in 15 years (by 2030); and
- 72 – 109 inmates in 20 years (by 2035).

The midpoint (average) of these four models was then calculated, and served as the baseline ADP projections for jail planning purposes.

Update — The same forecasting models were updated with 27 months of additional data.

The updated results for Model 1 (the ROI projections) were untenable, with a 20-year projection that was below the Detention Center's annual ADP over the past two years. Therefore, the results of that model were excluded from the updated midpoint projections.

The updated results from the other three models estimate that the Detention Center will have an annual ADP of:

- 77 – 94 total inmates by 2020 (the five-year estimate from the 2015 study); and
- 88 – 121 total inmates by 2025 (the ten-year estimate).

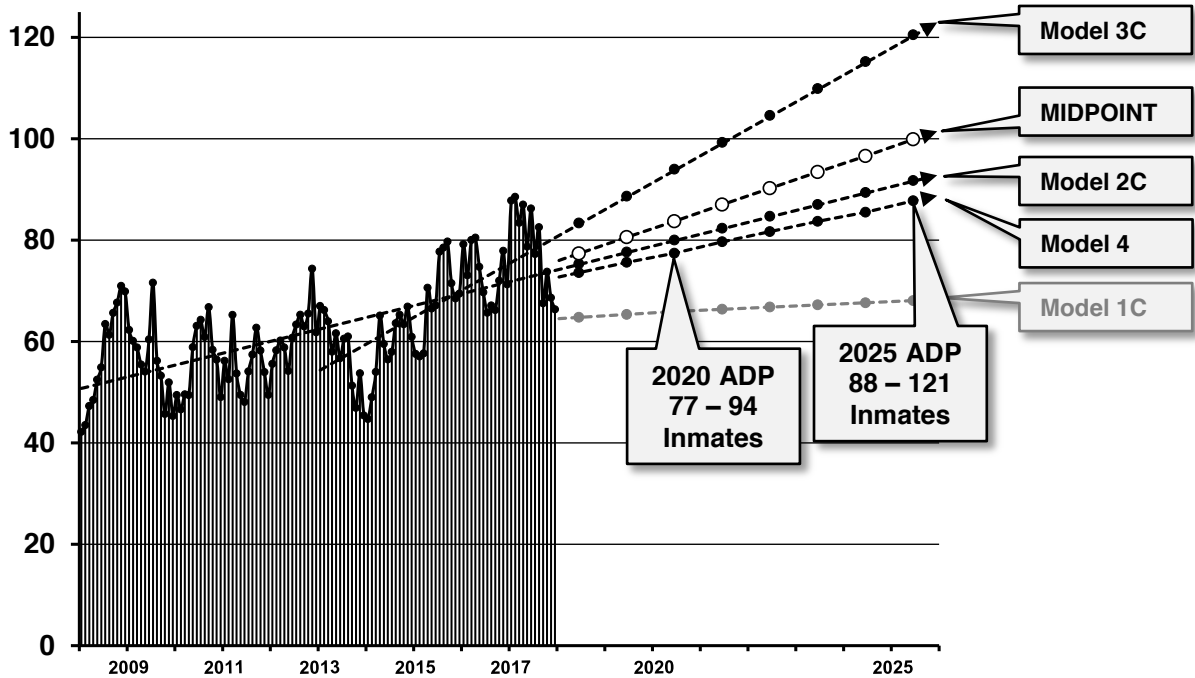
Updated long range projections estimate that the Detention Center will have an ADP of:

- 98 – 147 total inmates by 2030 (the 15-year estimate); and

- 108 – 174 total inmates by 2035 (the 20-year estimate).

The graph and table on the following page show the Detention Center's total inmate population from 2008 through 2017, and the results of the updated inmate population projection models through the ten-year estimate from the 2015 study.

Updated ADP Projections — Total Inmates (2018 – 2025)



Forecast Year from 2015 Study	Year	Updated Model 1C <i>ROI</i>	Updated Model 2C <i>10-Yr. Trend</i>	Updated Model 3C <i>5-Yr. Trend</i>	Updated Model 4 <i>ALOS</i>	Updated MIDPOINT <i>Average</i>
1	2016	—	—	—	—	—
2	2017	—	—	—	—	—
3	2018	65	75	83	74	77
4	2019	65	77	89	76	81
5	2020	66	80	94	77	84
6	2021	66	82	99	80	87
7	2022	67	84	105	82	90
8	2023	67	87	110	84	93
9	2024	68	89	115	86	97
10	2025	68	91	121	88	100

Model 1C — Rate of Incarceration (ROI) Projections. Based on the ROI per 1,000 residents, applied to the County’s population projections. The results were excluded from the updated midpoint projections.

Model 2C — Ten-Year Average Daily Population (ADP) Trend Projections. Projections based on the total ADP trend over the past ten years (2008 – 2017).

Model 3C — Five-Year ADP Trend Projections. Projections based on the total ADP trend over the past five years (2013 – 2017).

Model 4C — Average Length of Stay (ALOS) Projections. Projections based on the annual ALOS from 2008 – 2017, applied to the Detention Center’s bookings trend.

D. Updated Forecast of Jail Capacity Requirements

2015 Study — The 2015 study applied a “peaking factor” and a “classification factor” to estimate the total number of jail beds (jail capacity) needed to support the projected inmate population.

- A peaking factor of 15 percent was used to accommodate routine fluctuations in the County’s inmate population, based on the average percentage the highest (peak) inmate population each month exceeded the ADP from 2008 – 2015.
- A classification factor of 10 percent was added to provide sufficient capacity for the separation of males and females, to separate inmates by custody classification (minimum, medium, or maximum security), and to allow further segregation for administrative and disciplinary purposes.

Applying these calculations to the baseline (midpoint) ADP projections, the 2015 study estimated that the Codington County Detention Center will need a total of:

- 88 jail beds in five years (by 2020), to support a total ADP of 70 inmates; and
- 97 jail beds in ten years (by 2025), to support a total ADP of 77 inmates.

Long range projections estimated that Codington County will need a total of:

- 106 jail beds in 15 years (by 2030), to support an ADP of 83 inmates; and
- 114 jail beds in 20 years (by 2035), to support an ADP of 90 inmates.

Update — The same methodology was applied to the updated baseline inmate population projections to estimate the number of jail beds (jail capacity) needed. The peaking factor was reduced from 15 percent to 14 percent, based on the average that the peak population exceeded the ADP each month over the past ten years. With these revisions, it is estimated that the Detention Center will need a total of:

- 105 jail beds by 2020 (the five-year estimate from the 2015 study), to support an ADP of 84 inmates; and
- 125 jail beds by 2025 (the ten-year estimate), to support an ADP of 100 inmates.

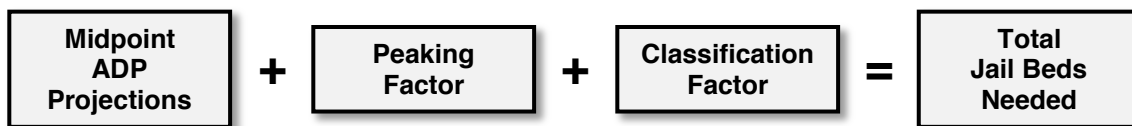
Updated long range projections estimate that the Detention Center will need a total of:

- 146 jail beds by 2030 (the 15-year estimate), to support an ADP of 116 inmates; and

- 166 jail beds by 2035 (the 20-year estimate), to support an ADP of 132 inmates.

The following table shows the updated baseline inmate population projections and estimated jail capacity requirements through the 20-year estimate from the 2015 study.

Updated Forecast of Jail Capacity Requirements (2018 – 2035)



Forecast Year	Year	Midpoint ADP Projections	Peaking Factor @ 14%	Classification Factor @ 10%	Total Jail Beds Needed
1	2016				
2	2017				
3	2018	77	11	9	97
4	2019	81	11	9	101
5	2020	84	12	10	105
6	2021	87	12	10	109
7	2022	90	13	10	113
8	2023	93	13	11	117
9	2024	97	14	11	121
10	2025	100	14	11	125
11	2026	103	15	12	129
12	2027	106	15	12	133
13	2028	109	15	12	137
14	2029	113	16	13	142
15	2030	116	16	13	146
16	2031	119	17	14	150
17	2032	122	17	14	153
18	2033	126	18	14	158
19	2034	129	18	15	162
20	2035	132	19	15	166

The jail population projections presented in this update provide reasonable parameters for facility planning purposes, and are based on Codington County's actual jail population trends over the past ten years (2008 – 2017). However, for the County's jail population to increase to these projected levels, there would have to be a commensurate increase in law enforcement, prosecution, and judicial resources in Codington County, well beyond their current levels, to support and sustain a jail population of that size.

It is important that Codington County continue to try to identify, quantify, and address the factors that are driving the County's jail population growth. Straight-line trends are not inevitable. Ultimately, these kind of growth numbers are likely unsustainable. However, they can be seen as the expected outcome if things don't change — and serve as a harbinger or warning against continuation of the status quo.

Codington County is currently in the process of making some important, multi-million dollar, facility planning decisions. The goal of this update was to establish some reasonable jail capacity estimates for facility planning purposes. Ultimately, the County will need to decide how large any jail expansion or new jail facility should be — given all the historical data, emerging issues, and current projections. Hopefully, the graphs, data, trend analysis, and other information in this report will aid the County in its efforts to make good decisions about how to address the County's growing jail population, and the appropriate size for any jail expansion or new jail facility.